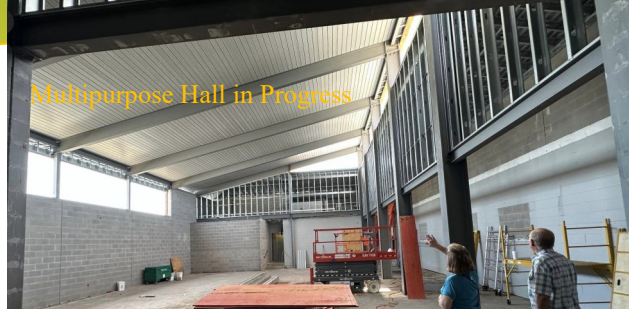




# The Bethel Beacon

June 2023



Dear Bethel Friend,

What a joy it has been to welcome visitors from far and near! We recently welcomed two former Bethel youth visiting us from California. Wayne Yang and Dr. Paul J.T. Khamdy Yang's visit was a great encouragement to our students and an added source of motivation to the Bethel staff. They shared their experiences at Bethel and how their participation in the youth program shaped their lives. Dr. Yang started his speech, recalling how he introduced himself in elementary school - *"I Khamdy. I no speak English."* He continued, *"I have a hole in my shoes and people called me **'Holeshoe'** But the staff at Bethel called me, **'You are Khamdy,'** and saw a potential in me."* The other visitor, Wayne Yang said, **"I am who I am because of the Bethel Center."** Hearing stories like theirs, we would like to thank you, our donors, for enabling us to work with children and youth, individuals and families, and senior citizens in our community. Without your prayers and financial support, we will not be able to offer hope and help. We want to say **THANK YOU** once again from the bottom of our hearts for your continued support.



While Mang, our executive director, went to drop off and pick up mail at the post office, he was approached by a postal worker asking him, "Do you speak Spanish? This young mother needs help. I think she wants to give up her baby." Mang said, "My Spanish is limited but I have a google app that allows me to do a conversation in English and Spanish." He discovered that the young mother had a two-year old and a newborn baby who needed diapers and baby food. Although the Bethel food pantry was already closed for the day, Mang guided her to Bethel and gave her a box of newborn diapers and some food. However, he had to go to Walmart in order to find the right kind of food for the newborn. Not long after, we called her to pick up the baby food. She was overjoyed knowing she would be able to feed her newborn baby for the next few days. **Our work at Bethel Center is very rewarding as it is touching and changing lives!**

We are very grateful to First Baptist Church of Olathe, Kansas, for again sponsoring our Summer Youth Enrichment Program kick off on Saturday, June 3rd. The food was delicious and the activities were fun for all ages. Having **"Good Neighbor"** as a theme, our summer program started on Monday, June 5th. We enrolled eighty-eight students and we are expecting to enroll more middle school and high school students.

We are yet to reach our summer program goal of \$50,000. If you like to donate online, please go to [www.bethelcenter.org/donate](http://www.bethelcenter.org/donate)

Thank you once again for your continued support of the Bethel ministry. Have a wonderful summer! May God bless you!

*Mang & Nem Sonna*

Rev. Mang & Nem Sonna

